

IMMEDIATELY AVAILABLE FOR LEASE

FORMER SPRINT CALL CENTER

1400 NE MCWILLIAMS ROAD
BREMERTON, WASHINGTON



PROPERTY FEATURES

±60,200 SQ. FT. TOTAL (DIVISIBLE)

- + Available Immediately
- + 483 employee paved / lighted parking stalls (7.8 stalls / 1,000 rentable square feet)
- + Single story, concrete tilt / steel framed construction
- + Fully sprinklered
- + Heavy Power
- + Easy access to State Route 303
- + 4 restrooms (2 men's, 2 women's)
- + Grade level, electric loading door
- + Diesel powered backup generator system
- + Monument signage available facing SR 303
- + Employee kitchen area



CONTACT US

BOB HACKER

Vice President
+1 253 596 0049
bob.hacker@cbre.com

DAVE MILLER

Vice President
+1 425 455 6917
dave.miller@cbre.com

CBRE
1201 Pacific Avenue
Suite, 1502
Tacoma, WA 98402

www.cbre.com/tacoma

CBRE

FOR LEASE FORMER SPRINT CALL CENTER

Bremerton, WA

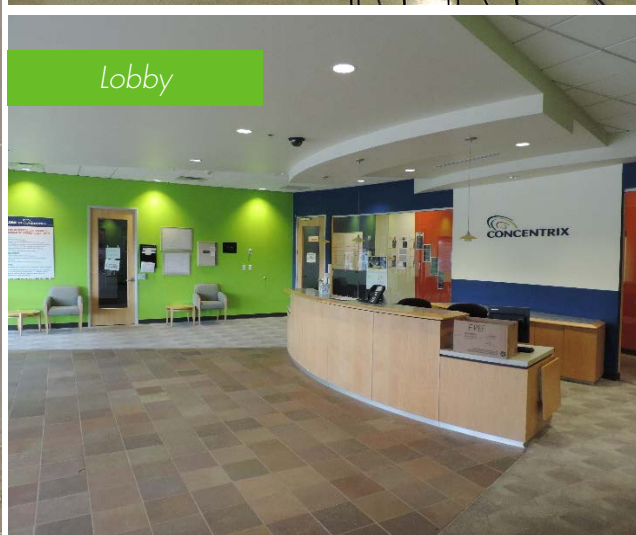
Aerial



Cafeteria



Lobby



Entrance



Office

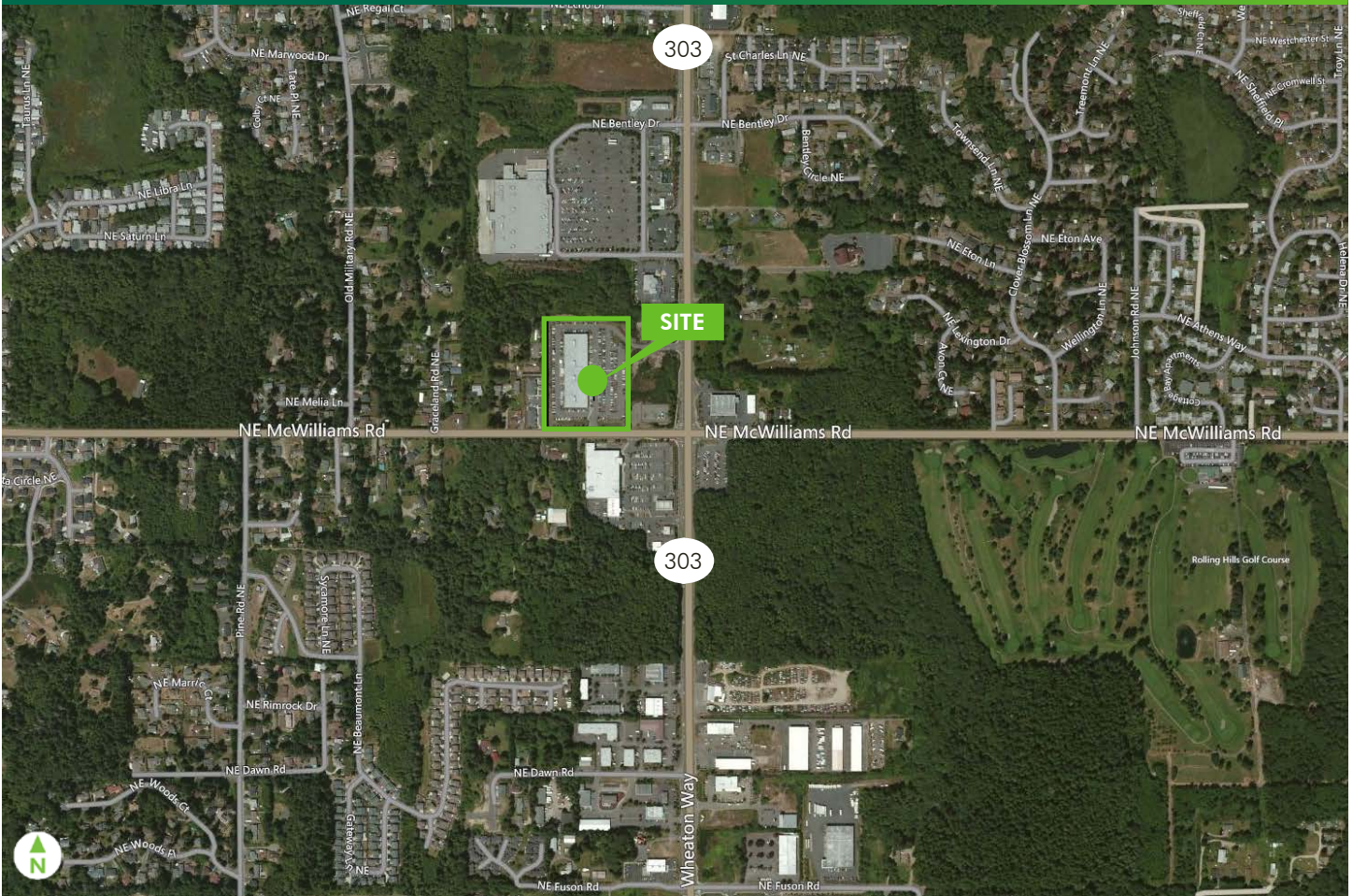


www.cbre.com/tacoma

CBRE

FOR LEASE FORMER SPRINT CALL CENTER

Bremerton, WA



2015 ESTIMATED DEMOGRAPHICS

	1 mile	3 mile	5 mile
Population	9,599	46,100	104,874
Average HH Income	\$67,389	\$69,213	\$70,975
Daytime Population	3,014	14,258	49,938

© 2016 CBRE, Inc. This information has been obtained from sources believed reliable. We have not verified it and make no guarantee, warranty or representation about it. Any projections, opinions, assumptions or estimates used are for example only and do not represent the current or future performance of the property. You and your advisors should conduct a careful, independent investigation of the property to determine to your satisfaction the suitability of the property for your needs. Photos herein are the property of their respective owners and use of these images without the express written consent of the owner is prohibited. CBRE and the CBRE logo are service marks of CBRE, Inc. and/or its affiliated or related companies in the United States and other countries. All other marks displayed on this document are the property of their respective owners. mmp 02/08/16

