



Employment
First
Coalition

CREATE A MIGHTY WORKFORCE:


EMPLOY PEOPLE WITH INTELLECTUAL AND
DEVELOPMENTAL DISABILITIES

WELCOME

A collaborative initiative elevating supported employment in Kitsap County.



Employment
First
Coalition



WHO IS THE
EMPLOYMENT
FIRST
COALITION?

MEET THE EFC TEAM



Holly Ridge Center



Vadis



Transforming lives

Division of Vocational Rehabilitation



Transforming lives

Developmental Disabilities Administration

TRIVIA TIME

MEET KAITLIN, VIDEO PRODUCTION
SPECIALIST AT GOODWILL





WHAT IS SUPPORTED EMPLOYMENT?

Meet Naomi, an employee at Henery Hardware!

WHAT IS A SUPPORTED EMPLOYMENT AGENCY?



**SUPPORTS: COMPETITIVE,
INTEGRATED EMPLOYMENT
OPPORTUNITIES FOR INDIVIDUALS
WITH INTELLECTUAL AND
DEVELOPMENTAL DISABILITIES**

**PROMOTES: EMPOWERMENT,
SELF-ADVOCACY, AND JOB
RETENTION THROUGH PERSON-
CENTERED EMPLOYMENT
PLANNING**

BENEFITS TO YOUR BUSINESS

1

IMPROVES TEAMWORK

2

CREATES EFFICIENCY AND STREAMLINES
PRODUCTIVITY

3

PROMOTES BETTER CANDIDATE
COMPATIBILITY TO JOB AND
ENVIRONMENT

4

COST FREE ASSISTANCE FOR
RECRUITMENT, TRAINING, AND ONGOING
EMPLOYMENT SUPPORT



MEET PAUL

Owner of
Westside Pizza
Kingston

TRIVIA TIME

MEET TONY, A GROCERY OUTLET
EMPLOYEE WITH JOB COACH DUREL



COUNTY IMPACT BY THE NUMBERS

307

ADULTS RECEIVED
EMPLOYMENT
SERVICES

\$1.34M

EARNINGS SPENT
IN LOCAL KITSAP
ECONOMY

120

LOCAL BUSINESSES
WHERE PEOPLE
ARE WORKING

STATE IMPACT BY THE NUMBERS

85%

JOB RETENTION
RATE AFTER ONE
YEAR

\$64.5M

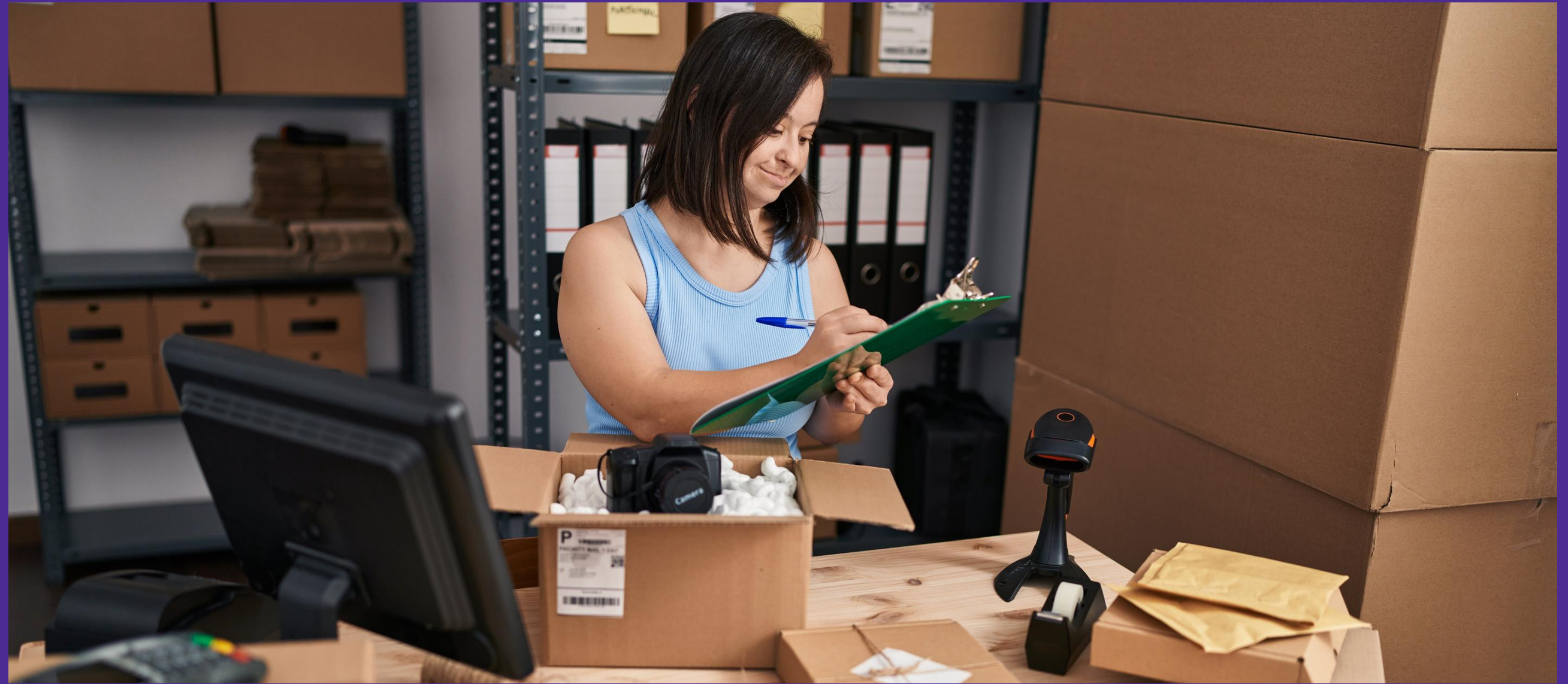
EARNINGS
SPENT IN LOCAL
ECONOMY

1 IN 4

ADULTS LIVE WITH
A DISABILITY

ECONOMIC BENEFITS

SOURCE: ACCENTURE (NYSE: ACN) IN PARTNERSHIP WITH Disability:IN and the American Association of People with Disabilities (AAPD). 8/29/2018



28%

HIGHER REVENUE

2X

HIGHER NET INCOME

30%

BETTER PERFORMANCE ON
ECONOMIC PROFIT MARGIN



LET'S GET TO KNOW YOU

Meet Linda and Keith, owners of
LK Auto with employee Anthony in
the center

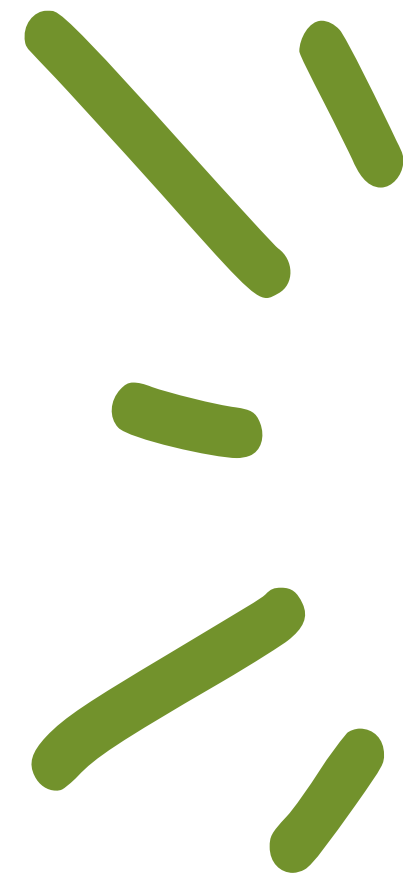


HOW CAN YOU CREATE A MIGHTY WORKFORCE?

Schedule An
informational
interview

SHARE OPEN
POSITIONS

CONTACT
EMPLOYMENT
FIRST COALITION



Q&A



MEET ASHLEY, HOUSEKEEPER AT
POULSBO INN AND SUITES

THANK
YOU!



Employment
First
Coalition